



CROSSLINK

Linking Today with Tomorrow

Quality
Focused

Excellent
Teamwork

Driving
Innovation & Technology



About

Provides a **unique portfolio of solutions** that protects and support innovative, tailor-made solutions especially to infrastructure developments. Its core business provides specialized contracting services to developers, contractors, operators and governments. The business also provide **comprehensive concept architectural & BIM solutions** globally and is at the forefront of designing, constructing and installing practical, environmentally friendly, alternative structures and materials, in order to reduce the impact to environments.

INTRODUCTION

Crosslink facilitates a wide variety of operational solutions and a range of related services with the support of strategic partnership has gained the reputation as one of the best **specialist construction & innovative technology service provider** in the region.

Our sound technical and professional expertise supported by a multidisciplinary in-house team, are both solid and renowned for the flexibility and creativity of its state-of-the-art implementation solutions in the design, construction and maintenance & operations

Our knowledge and resources are often key to the safe, reliable and responsible operation in every stage of the project.



Infrastructure and Engineering

Our total package of geological, geophysical, geotechnical, environmental, and consultancy services, along with design, engineering and construction support, makes us a valuable partner. We provide technical expertise and global resources to deliver data, advice, and support and project efficiencies, regardless of the size and location. Our one stop shop for turnkey solutions with an integration of the full range of services required by the client, supports significantly in considering us one of their trusted partners for their solutions.

FEASIBILITY STUDIES & SITE INVESTIGATION

DESIGN & ENGINEERING

OUR EXPERTISE

Our project-wide capabilities include:

1. Earthworks Construction

- 1.1. Excavation Works (Trench Excavation; Deep Excavation)
- 1.2. Backfilling Works
- 1.3. Clearing, Grubbing & Levelling works
- 1.4. Roadway excavation
- 1.5. Rock excavation
- 1.6. Foundation Preparations
- 1.7. Embankment Construction
- 1.8. Compaction Works
- 1.9. Earth Moving / Transportation

2. Temporary Shoring System / Excavation support system

3. Removal of existing structures (Buildings, pipelines, Pavement)

4. Complete Surveying Solutions.

- 4.1. Topographic Surveying and Mapping
- 4.2. Underground Utility Detection using Non Invasive Investigations
- 4.3. Bathymetric Surveying
- 4.4. 3D Laser Scanning

5. Dewatering Systems

- 5.1. Well Point System
- 5.2. Deep Well System

CONSTRUCTION & OPERATIONAL SUPPORT

CONSULTANCY

6. Foundation Solutions (Footings)

- 6.1. Complete Foundation Solutions from excavation till casting and subsequent structural backfilling works.

7. Foundation Solutions (Piling)

- 7.1. Complete Piling Solutions from design to the execution of the piles.
- 7.2. Execution of Bored Cast in Situ Foundation piles (from Dia. 600mm to 1600mm).
- 7.3. Execution of Pile Testing (NDT).
- 7.4. Execution of Pile Load Tests.

8. Foundation Solutions (Micro Piles/Ground Anchors)

- 8.1. Execution of Ground anchors / Micro Piles

9. Concrete Works

- 9.1. Cast In Situ Works
- 9.2. Pre-Cast works

10. Water-Proofing works



Our consultants and partners who are professionals shall bring a unique blend of experience and creativity to assist others achieves their optimal level of their output by refining their knowledge, skills, and abilities in the workplace. They have extended their services with a variety of GCC companies (Oil& Gas, Banking, Petro-chemical Industries and other industrial sectors) training institutes, colleges and universities in many roles.

Crosslink’s aim is Building together a better world with Knowledge & Skill.

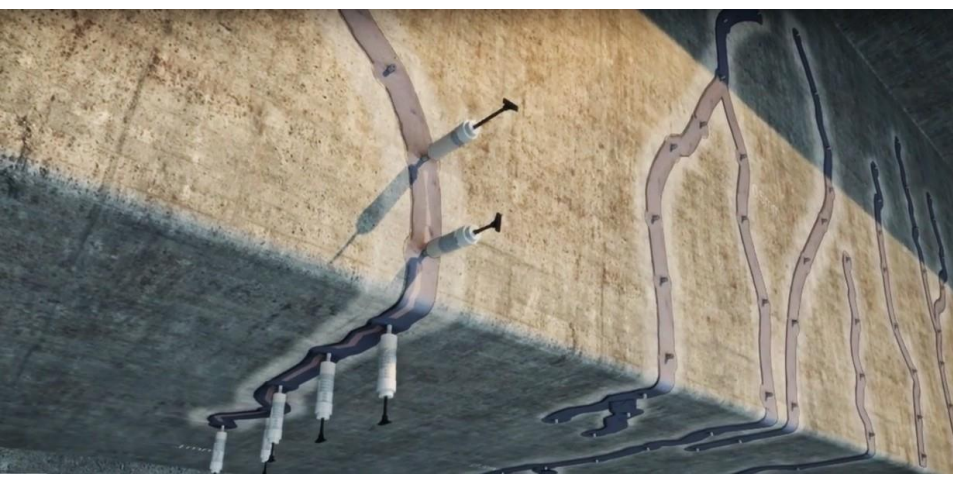
1. General English
2. English for Professions
3. (Levels 1-5)
4. Professional soft skills
5. C- Suite and Managers
6. Finance
7. Coaching
8. Insurance
9. Risk management and Business Continuity
10. Risk Management | Enterprise Risk
11. Leadership & Management
12. Management | Business Strategy
13. People | Leadership | Behaviourial
14. Legal | Regulatory | Governance



Know what you know (capture)
 Grow what you know (share)
 Make the most of what you know (apply)

1. Knowledge loss risk analysis
2. Building and curating eBodies of Knowledge (hot topic)
3. Deep knowledge capture
4. Data analytics-based knowledge
5. Knowledge transfer mentoring (hot topic)
6. User experience-centered knowledge-sharing platforms, communities and libraries
7. Deep learning-based corporate training and development
8. Knowledge-based data analytics
9. Knowledge management strategy
10. People, process and technology alignment
11. Knowledge governance
12. Communication and change management
13. Performance measurement





SPECIALIST CONTRACTOR FOR STRUCTURAL/CONCRETE REPAIR AND RESTORATION

Crosslink is a specialist contractor for structural/concrete repair and restoration, provide engineering & support services for all sectors of industry. We have aligned & partner with many leading chemical adhesives manufacturer's in the world to carryout structural adhesives for concrete repair and restoration works. Because of the flexibility of using multiple chemical vendors, our technical experts can assure and commit a quality service with minimum price and also help us to prepare a tailor-made proposal for the clients based on the requirements.



Sure Seal
Your Structural Needs

We provide technical guidance on practical work applications for a variety of complex Crack Injection projects and Structural strengthening to relieve stresses generated by design or construction errors, or to restore original load capacity to damaged structural elements. Whatever, your requirements are, as an experienced concrete company has the resources (technically, skilled labour, a wide selection of materials, and the right equipment) to accommodate all your needs.

1. Waterproofing

- 1.1. Self-adhesives membrane waterproofing
- 1.2. Liquid membrane waterproofing (All types)
- 1.3. Cementitious waterproofing
- 1.4. Crystalline waterproofing
- 1.5. Torch applied bituminous waterproofing



2. Crack Injection

- 2.1. Epoxy crack Injection
- 2.2. Polyurethane crack Injection
- 2.3. Turbo Seal Injection



3. Coating

- 3.1. Epoxy Coating
- 3.2. Anti-Carbonation
- 3.3. Polyurethane Coating
- 3.4. Concrete Floor Self Leveling

4. Concrete repair

- 4.1. Concrete Preservation
- 4.2. Concrete Strengthening
- 4.3. Concrete Restoration



5. Expansion Joint sealant

- 5.1. Polysulfide Sealant
- 5.2. Polyurethane Sealant
- 5.3. Silicon Sealant



SURVEYING

Crosslink survey team is fully equipped to carry out various range of survey services such as topographic survey, engineering survey, measured building survey, stock piles quantity survey, utilities above and underground survey and survey project management.

We offer Clients expertise in GPS satellite positioning, hydrographic and bathymetric survey, aerial surveying and survey training. Our partners has extended their services in the field of commercial development, oil and gas industry, route profiling, offshore construction and preservation of historic buildings. Utilizing the latest advances in survey technology and the specialist skills of experienced staff.

Listed below few integrated range of professional survey activities

- 1. Topographic surveying**
- 2. Engineering surveying**
- 3. Measured building survey**
- 4. Utilities survey**
- 5. Stock piles quantity survey**
- 6. Survey project management**
- 7. GPS satellite positioning.**
- 8. Hydrographic and bathymetric survey**



COMPREHENSIVE ARCHITECTURAL AND BIM SOLUTIONS

As one of the professional companies, one of our primary focuses is Building Information Modeling (BIM) for Architectural, Structural and MEP. These are our core services. We offer a wide range of point cloud-related products such as 2D documentation, 3D models, Building Information Models (BIM), and PDMS models. Our services are suitable for industrial sites, installations, architecture, heritage and large-scale urban regeneration projects. We have highly-skilled staff which allows us to process all our data in-house.

We use software like **Revit, Autocad MEP, CAD Duct, CAD Pipe, Navisworks, Autocad Fabrication.**

We help all the stakeholders involved in a project's lifecycle such as architects, construction companies, general & specialty contractors and facility managers deliver successful projects in spite of their limited budgets, shortage of qualified manpower and tight schedules. At each stage of the construction lifecycle, we provide collaborative BIM solutions to all professionals involved in a project from the design team ranging from architects, landscape architects, civil & structural design consultants, engineers to the general contractor.

Key Services

- 3D Model (BIM) with specified detailing for Structural, Architectural and MEP (Mechanical, Electrical and Plumbing) drawings.
- 2D CAD drafting including Mechanical & Electrical services.
- 3D Visualization and Development of Exterior & Interior Rendered view, 3D Sections/ Cut Sections, MEP and Walk through.
- Space Planning, Developing Working Drawings, Detailing of Interiors, Electrical fixtures, Plumbing, Sanitation.
- Online clash detection / coordination meetings available.
- Project Management Services





**P.B. No. 47023,
Fahaheel 64023,
Kuwait.**

**Tel: (965) 23924408,
Fax: (965) 23924406,**

**Email: info@crosslinkglobal.com,
Website: www.crosslinkglobal.com**